



Financial Management

2020 question bank

We have made the question banks available to you in two formats: 'browser-based' requiring internet access throughout and 'offline' downloadable packages, so you can download the packages and then work through them offline.

Please follow the links below for step-by-step guides.

- [Guidance for browser-based question bank content](#)
- [Guidance for offline question bank content](#)

Make sure you check if any errata have been issued for any of these questions before attempting them. Any errata will be listed on the module's exam resources page of the ICAEW website.

Tops tips

- Please visit www.icaew.com/cbe to access webinars, exam guidance and sample answers from our examiners.
- You should test the compatibility of both the browser-based and offline mock exams on their devices prior to use. In particular, it is essential that you check that the exporting functionality is working correctly before you begin answering any questions.
- Export and save after each question you practice – you can always go back and edit a question and save again if needed. Unlike mock exams, question bank packages will not save all responses when the 'Finish' button is selected. Once you close the browser, your answers will not be saved anywhere unless you have already exported and saved. This will be different in the real exam as your responses will automatically be saved throughout and upon completion.
- The export function expands all cells to display all the entered content in the export output. **Please note this is not the case for live exams.** Therefore, all of your response should be visible in the response area on screen, without the need to interrogate cells or select cells to view the preview bar. The examiners will only mark the content that is directly visible in the response area on screen and will not interrogate cells or use the preview bar to mark hidden content. The markers will not be able to export responses to view any hidden content.

Guidance for browser-based question banks

It is recommended that Chrome is used to access the links below, which will take you to the browser-based software showing the respective content of the question bank.

Links to online questions	Coverage of question bank
http://elearning.icaew.com/training/FM20QB01/index.html	Objectives and investment appraisal Q1 – 12
http://elearning.icaew.com/training/FM20QB02/index.html	Finance and capital structure Q13 – 19
http://elearning.icaew.com/training/FM20QB03/index.html	Business valuations, plans, dividends and growth Q20 – 25
http://elearning.icaew.com/training/FM20QB04/index.html	Risk management Q26 – 30
http://elearning.icaew.com/training/FM20QB05/index.html	March 2016 exam Q31 – 33
http://elearning.icaew.com/training/FM20QB06/index.html	June 2016 exam Q34 – 36
http://elearning.icaew.com/training/FM20QB07/index.html	September 2016 exam Q37 – 39
http://elearning.icaew.com/training/FM20QB08/index.html	December 2016 exam Q40 – 42
http://elearning.icaew.com/training/FM20QB09/index.html	March 2017 exam Q43 – 45
http://elearning.icaew.com/training/FM20QB10/index.html	June 2017 exam Q46 – 48
http://elearning.icaew.com/training/FM20QB11/index.html	September 2017 exam Q49 – 51
http://elearning.icaew.com/training/FM20QB12/index.html	December 2017 exam Q52 – 54
http://elearning.icaew.com/training/FM20QB13/index.html	March 2018 exam Q55 - 57
http://elearning.icaew.com/training/FM20QB14/index.html	June 2018 exam Q58 – 60
http://elearning.icaew.com/training/FM20QB15/index.html	September 2018 exam Q61 – 63
http://elearning.icaew.com/training/FM20QB16/index.html	December 2018 exam Q64 – 66
http://elearning.icaew.com/training/FM20QB17/index.html	March 2019 exam Q67 – 69
http://elearning.icaew.com/training/FM20QB18/index.html	June 2019 exam Q70 – 72
http://elearning.icaew.com/training/FM20QB19/index.html	September 2019 exam Q73 - 75

Guidance for offline question banks

Please note that these are general instructions; the specific steps may vary depending on your operating system.

1. Download .zip file

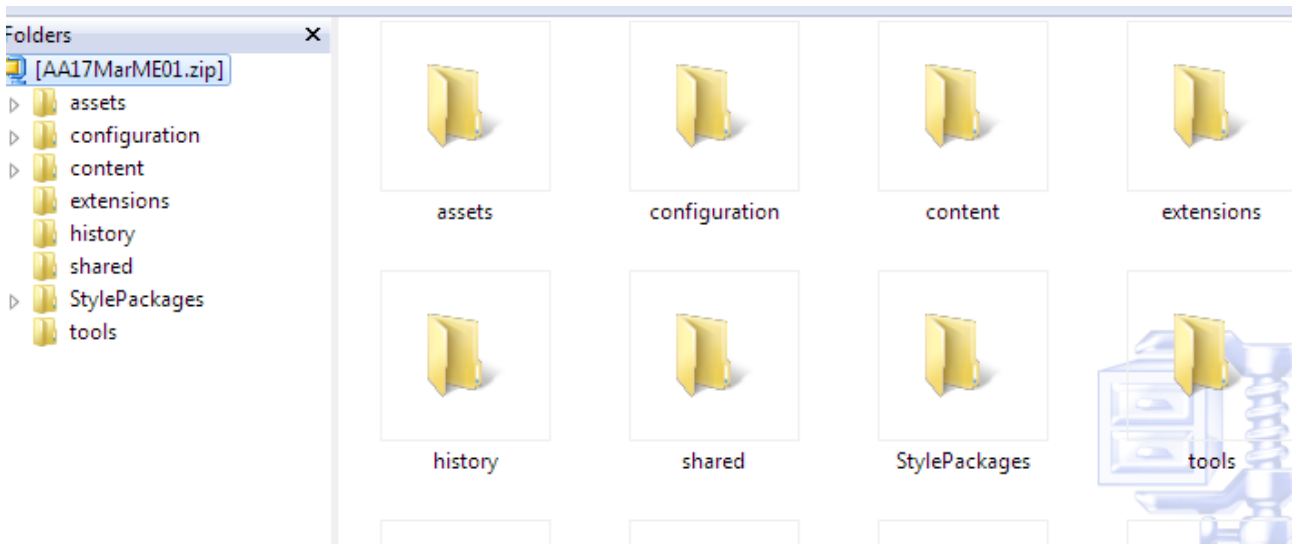
- a. Click on link to relevant question bank package:

Links to .zip files	Coverage of question bank
http://elearning.icaew.com/training/FM20QB01.zip	Objectives and investment appraisal Q1 – 12
http://elearning.icaew.com/training/FM20QB02.zip	Finance and capital structure Q13 – 19
http://elearning.icaew.com/training/FM20QB03.zip	Business valuations, plans, dividends and growth Q20 – 25
http://elearning.icaew.com/training/FM20QB04.zip	Risk management Q26 – 30
http://elearning.icaew.com/training/FM20QB05.zip	March 2016 exam Q31 – 33
http://elearning.icaew.com/training/FM20QB06.zip	June 2016 exam Q34 – 36
http://elearning.icaew.com/training/FM20QB07.zip	September 2016 exam Q37 – 39
http://elearning.icaew.com/training/FM20QB08.zip	December 2016 exam Q40 – 42
http://elearning.icaew.com/training/FM20QB09.zip	March 2017 exam Q43 – 45
http://elearning.icaew.com/training/FM20QB10.zip	June 2017 exam Q46 – 48
http://elearning.icaew.com/training/FM20QB11.zip	September 2017 exam Q49 – 51
http://elearning.icaew.com/training/FM20QB12.zip	December 2017 exam Q52 – 54
http://elearning.icaew.com/training/FM20QB13.zip	March 2018 exam Q55 - 57
http://elearning.icaew.com/training/FM20QB14.zip	June 2018 exam Q58 – 60
http://elearning.icaew.com/training/FM20QB15.zip	September 2018 exam Q61 – 63
http://elearning.icaew.com/training/FM20QB16.zip	December 2018 exam Q64 – 66
http://elearning.icaew.com/training/FM20QB17.zip	March 2019 exam Q67 – 69
http://elearning.icaew.com/training/FM20QB18.zip	June 2019 exam Q70 – 72
http://elearning.icaew.com/training/FM20QB19.zip	September 2019 exam Q73 - 75

- b. Click 'save' and select 'save as' - make a note of where you've saved the .zip file, i.e. which drive
c. Close

2. Unzip file contents

- a. Navigate to the location of the saved .zip file
- b. Create a sub-folder
- c. Open .zip file
- d. Right click on the .zip file (see image below) and select 'extract'



3. Prepare browser

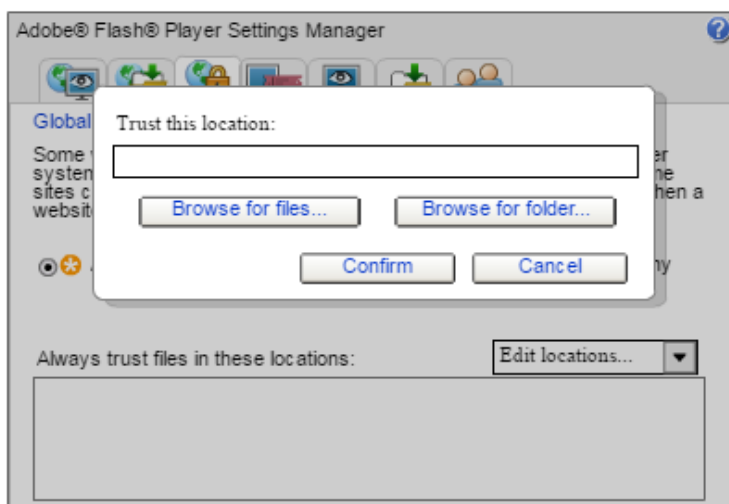
Even though the test will be run locally, without the need for internet connectivity, it will still be displayed via a browser. Chrome and Firefox are supported for running content offline with the exporting functionality, although Chrome is recommended.

- a. Access the following website in Chrome:

http://www.macromedia.com/support/documentation/en/flashplayer/help/settings_manager04.html

- b. Click on 'Edit locations'
- c. Select 'Add locations' and input the location of the folder where you have saved the extracted content (you can use 'browse for folder' to navigate to the location). This is the folder location rather than the file itself, so it should appear as a file path. We recommend that you input the overall drive rather than individual folders, eg G:\

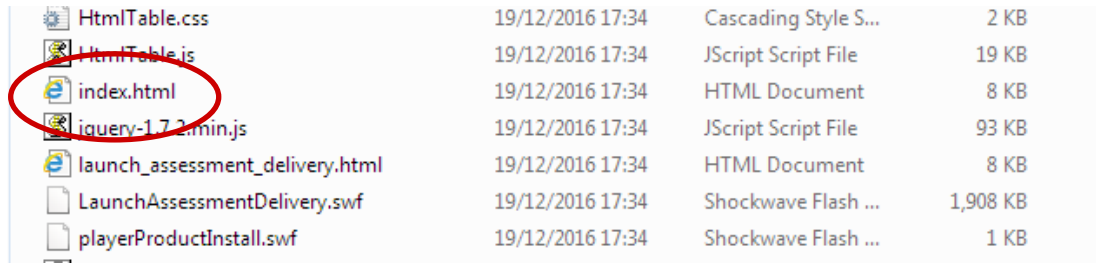
Global Security Settings panel



- d. Press 'Confirm' to give Chrome appropriate permission to access the files you have saved in the specified location

4. Access test

- a. Within the extracted test folder, right click on the 'index' file step and select 'Open with' Chrome to launch the test:



HtmlTable.css	19/12/2016 17:34	Cascading Style S...	2 KB
HtmlTable.js	19/12/2016 17:34	JScript Script File	19 KB
index.html	19/12/2016 17:34	HTML Document	8 KB
jquery-1.7.2.min.js	19/12/2016 17:34	JScript Script File	93 KB
launch_assessment_delivery.html	19/12/2016 17:34	HTML Document	8 KB
LaunchAssessmentDelivery.swf	19/12/2016 17:34	Shockwave Flash ...	1,908 KB
playerProductInstall.swf	19/12/2016 17:34	Shockwave Flash ...	1 KB

Note: if the test doesn't launch after 30 seconds, open Chrome separately then repeat the above 'index' file step.