



Case Study – Cyclone (CBE)

We have made these materials available in two formats: 'browser-based' requiring internet access throughout and 'offline' downloadable packages, so students can download the packages and then work through them offline.

Follow the links below for step-by-step guides.

- [Guidance for browser-based content](#)
- [Guidance for offline content](#)

Variations between the practice and live exam software:

- The practice software has an export button so answers can be exported for marking. This is not available in the real exam, where answers are automatically sent to the examiners when the exam finishes.
- When answers are exported in the practice software, the cells will automatically expand. This will not happen in the real exam so it is crucial students check all cells are expanded as examiners will only mark what they see on screen.
- Make sure students save and export their answers after each question. They will not need to do this in the live exam.
- The practice software does not have a timer, but in the real exam the timer will count down.
- Once the practice software is opened, students may need to zoom out to see the software correctly. This will not need to be required in the real exam.

Guidance for browser-based access

It is recommended that Chrome is used to access the links below, which will take you to the browser-based software showing the content.

Simply pass on the below link to your students when you're ready for them to sit their mock exam.

Cyclone Case Study

<http://www.icaew.com/emags/training/C453CYC/index.html>

Guidance for offline access

Please note that these are general instructions; the specific steps may vary depending on your operating system.

1. Download .zip file

- a. Click on link to relevant package:

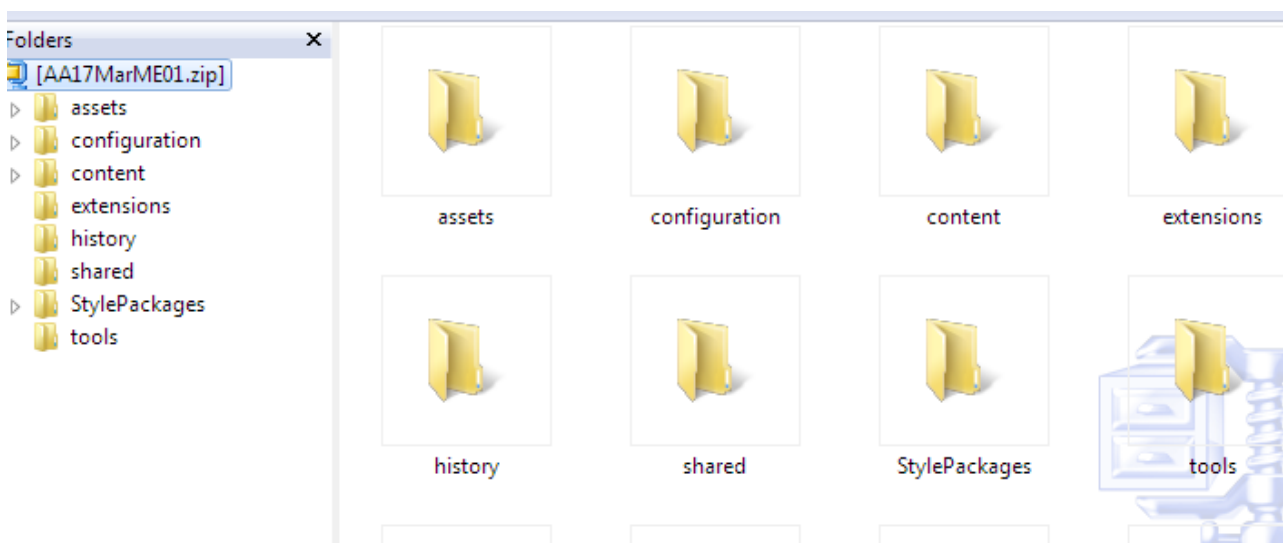
Cyclone Case Study

<http://www.icaew.com/emags/training/C453CYC.zip>

- b. Click 'save' and select 'save as' - make a note of where you've saved the .zip file, i.e. which drive
- c. Close

2. Unzip file contents

- a. Navigate to the location of the saved .zip file
- b. Create a sub-folder
- c. Open .zip file
- d. Right click on the .zip file (see image below) and select 'extract'



3. Prepare browser

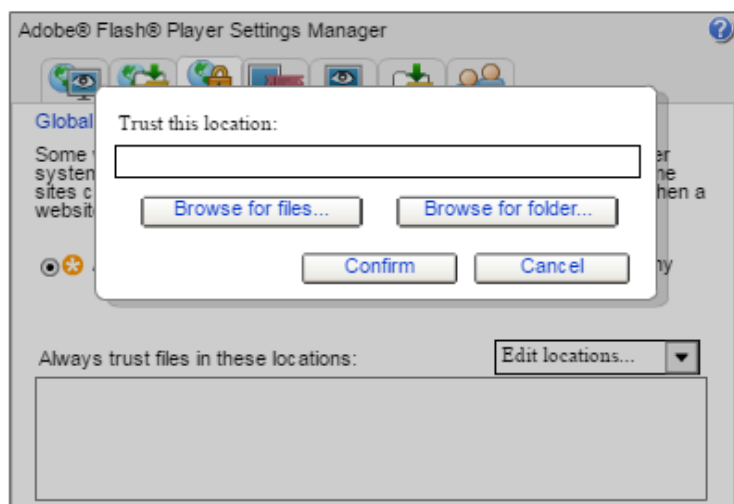
Even though the test will be run locally, without the need for internet connectivity, it will still be displayed via a browser. Chrome and Firefox are supported for running content offline with the exporting functionality, although Chrome is recommended.

- a. Access the following website in Chrome:

http://www.macromedia.com/support/documentation/en/flashplayer/help/settings_manager04.html

- b. Click on 'Edit locations'
- c. Select 'Add locations' and input the location of the folder where you have saved the extracted content (you can use 'browse for folder' to navigate to the location). This is the folder location rather than the file itself, so it should appear as a file path. We recommend that you input the overall drive rather than individual folders, eg G:\

Global Security Settings panel



- d. Press 'Confirm' to give Chrome appropriate permission to access the files you have saved in the specified location

4. Access test

- a. Within the extracted test folder, right click on the 'index' file step and select 'Open with' Chrome to launch the test:

HtmlTable.css	19/12/2016 17:34	Cascading Style S...	2 KB
HtmlTable.js	19/12/2016 17:34	JScript Script File	19 KB
index.html	19/12/2016 17:34	HTML Document	8 KB
jquery-1.7.2.min.js	19/12/2016 17:34	JScript Script File	93 KB
launch_assessment_delivery.html	19/12/2016 17:34	HTML Document	8 KB
LaunchAssessmentDelivery.swf	19/12/2016 17:34	Shockwave Flash ...	1,908 KB
playerProductInstall.swf	19/12/2016 17:34	Shockwave Flash ...	1 KB

Note: if the test doesn't launch after 30 seconds, open Chrome separately then repeat the above 'index' file step.